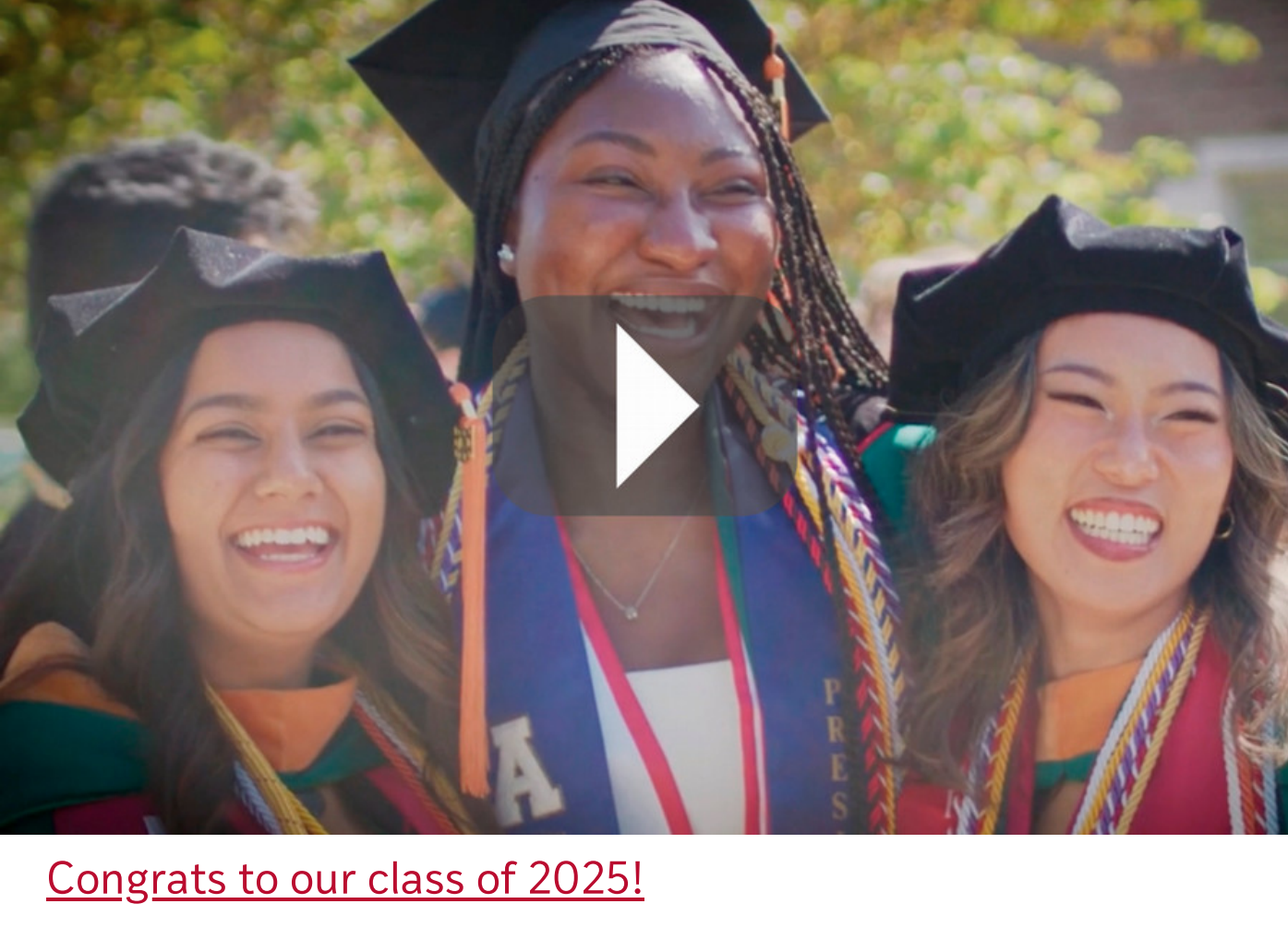


Biomedical Engineering News

June 2025



[Congrats to our class of 2025!](#)

We devote this newsletter to our most joyful tradition: celebrating our graduates from BS to PhD. While May brought us joy, it also brought a tornado and its disastrous impacts to our campus and the St. Louis region. In the community spotlight below, we highlight how WashU is mobilizing to help clean up the St. Louis area.

Experiencing joy and tragedy is the gift and cost of being human. It prepares us to be resilient and ready for change. As you will see from our student and faculty stories below, we remain committed to hands-on learning, cutting-edge innovation, and fundamental research to advance human health while growing a truly inter-disciplinary and multi-cultural campus experience.

Wishing all a peaceful and safe summer ahead,

WashU BME

GRADUATE SPOTLIGHTS

[Outstanding BME Graduates](#)

Click through to read about some of WashU's outstanding graduates in BME. Whether they are going into industry or continuing their education, they make us proud everyday!



[Made with care](#)

McKelvey BME students lead toddler wheelchair build event in makerspace.

[BME doctoral student Okafor wins first place, People's Choice awards at PhD-in-3D competition](#)

Somtochukwu Okafor won the awards for presenting her research on scaffolds at the McDonnell International Scholars Academy PhD-in-3D competition.



[McKelvey Engineering students, alumni recognized by NSF Graduate Research Fellowships](#)

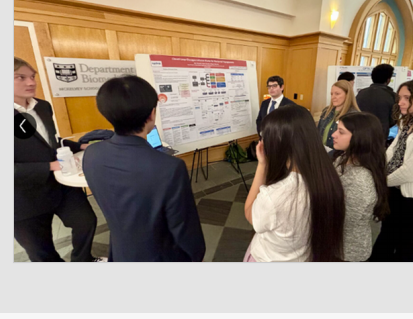
Two students offered NSF fellowship; several students and alumni received honorable mentions.

[Doctoral students win SNMMI grants](#)

The three students are members of the lab of Abhinav Jha in biomedical engineering.



BME SOCIAL SPOTLIGHT



[BME Day](#)

Seniors presented innovative ideas developed during their capstone design experience.



[A 50-year reunion!](#)

Chas Eggert (left), chair of the McKelvey Engineering Biomedical Engineering External Advisory Board who earned a bachelor's degree in chemistry and an MBA, reunites with his WashU roommate, Nobel Laureate WE Moerner, who earned bachelor's degrees in physics, electrical engineering and math. Check out more images on the [WashU Alumni Facebook page](#).

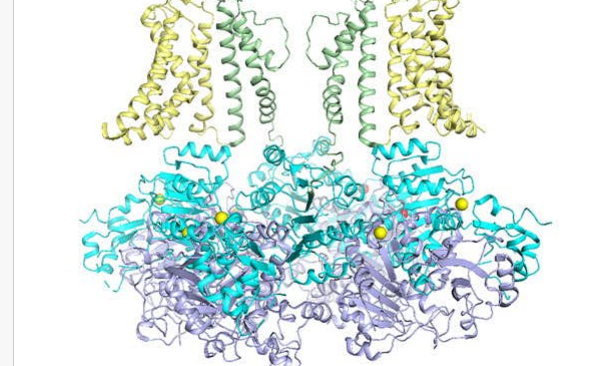
COMMUNITY SPOTLIGHT

[WashU community joins neighbors in tornado recovery](#)

WashU's Danforth Campus suffered moderate damage when a deadly tornado ripped through parts of St. Louis May 16, and the storm took down multiple large trees. But other neighborhoods suffered greatly. In the aftermath, the WashU community has quickly mobilized to help its neighbors. (Photo: Whitney Curtis/WashU)



Faculty Awards and Recognitions



[Genetic mutations in potassium ion channel target of new drug development](#)



[Brain decoder controls spinal cord stimulation](#)



[Inaugural AI for Health seed funding program awards nearly \\$300,000](#)



[Leuthardt selected as AIMBE fellow](#)

COMMUNITY SPOTLIGHT

[BME professor joins in data rescue](#)

The Data Rescue Project at WashU is part of a national call to archive federal datasets at risk of deletion. BME professor Kurt Thoroughman joined WashU faculty and students in a data rescue event in March. The [St. Louis Post-Dispatch reported](#) (subscription required) that Thoroughman helped save a 2023 report from a National Science Foundation website about the representation of women, minorities and persons with disabilities in STEM. "These reports are going away," he said. "That's what motivated me to come in." More coverage from [STLPR](#).

